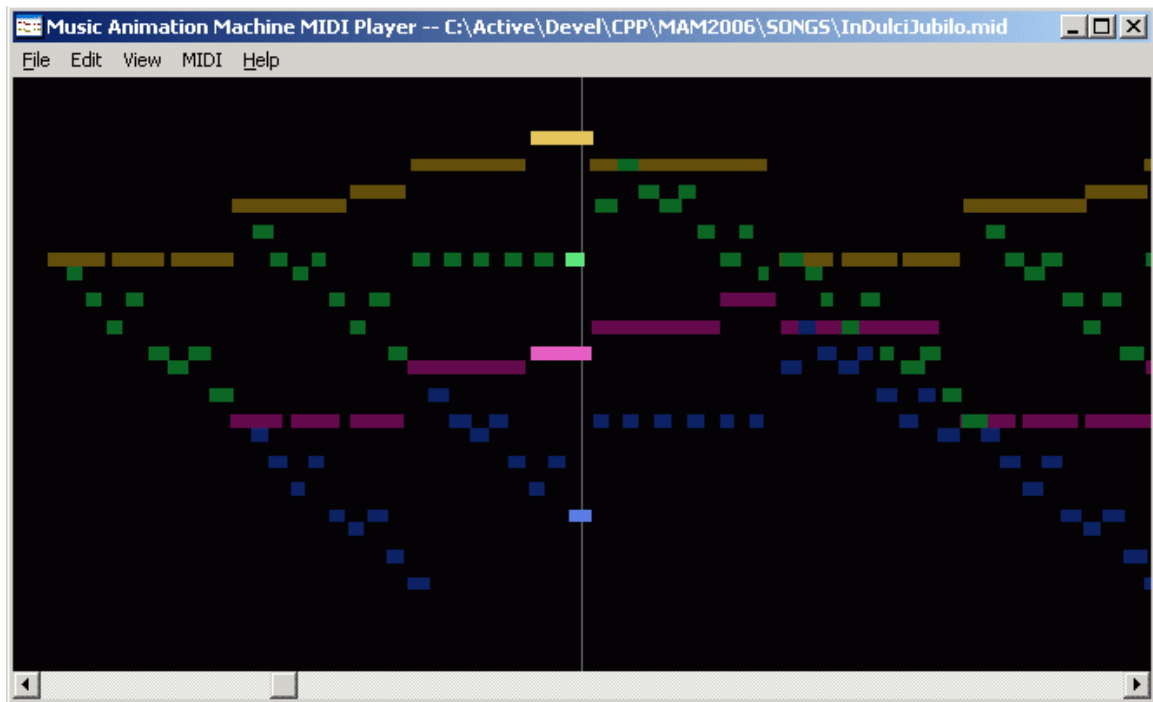


Music Animation Machine
MIDI Player / Viewer
(“MAM Player”)



User Guide

This version of the user's guide covers features and limitations through release 33

Overview

The MAM Player is a MIDI file player that generates various kinds of graphical displays in response to (and in sync with) the MIDI data as it plays. It will also produce these displays in response to live MIDI input.

Features

- plays MIDI files with displays generated from MIDI data
- generates displays in real-time from live MIDI input
- display types: bar-graph, pitch class, interval type, tonality, triads

Limitations

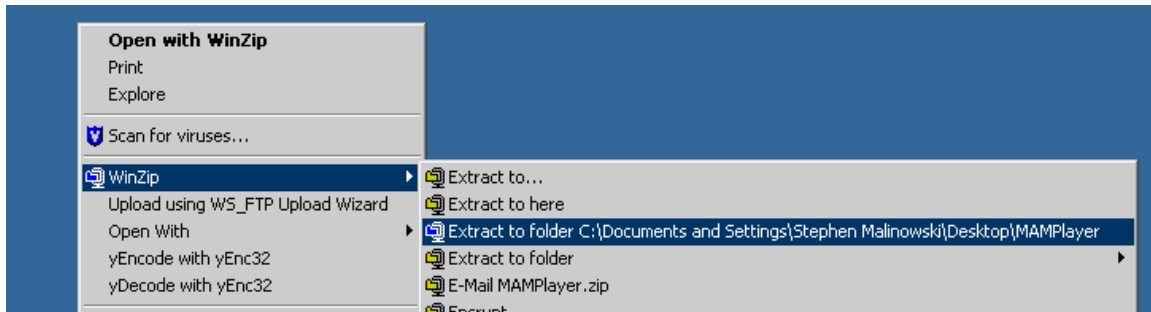
- may not work on versions of Windows other than XP (under testing)
- no Mac OS version available
- does not record MIDI (except in a limited way; cannot save recorded MIDI)
- custom display colors only saved in a proprietary (non-MIDI compatible) file format
- MIDI System Exclusive messages are not handled (or saved to proprietary format)
- file-related operations are poorly implemented (e.g. doesn't prompt for overwrite)
- some UI operations take a long time to complete (e.g. scrolling in long pieces)
- doesn't support borderless full-screen mode (for concert use)
- mouse commands do not auto-repeat
- no pass-through mode for live play mode

Contents of this guide

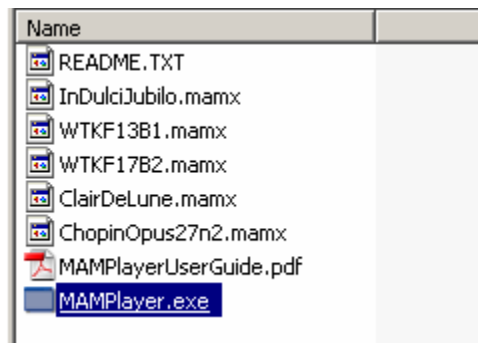
Page	Description
2	Overview, Features, Limitations, Contents
3	Quick Start
4	Display Types and Display Options
11	What's in the menus
12	Live Play
13	Diagnostics and Debugging
14	FAQ (aka "stuff I haven't organized yet")

Quick Start (5 steps)

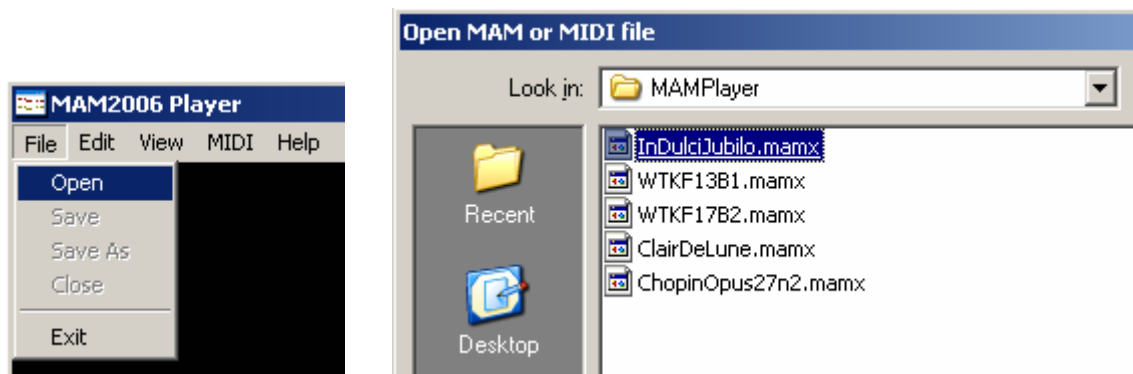
1. Download the MAMPlayer ZIP file from www.musanim.com/player
2. Right-click the ZIP file and extract its contents into a folder:



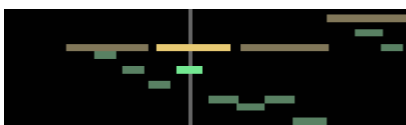
3. Double-click **MAMPlayer.exe** in that folder:



4. Open one of the .mamx files:

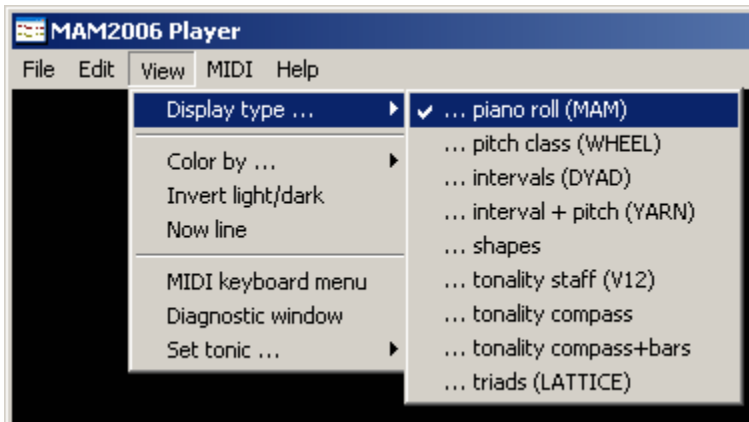


5. Press the space bar to start the piece playing.



Display Types and Display Options

The MAM Player displays are selected in the **Display type** selection of the **View** menu:



The display types are described briefly below. More information is available in the online MAM History pages: www.musanim.com/mam/mamhist.htm

1. Piano Roll (MAM) Display



This is the original Music Animation Machine display. Time is shown left-to-right (past is toward the left of center; future is toward the right), pitch is shown bottom-to-top (higher notes are further toward the top). There are various things you can customize in this display:

- width of the notes — up/down arrow keys
- how the notes are colored — either “by part” (each instrument or line of music gets its own color), or “by pitch class” (all Cs have the same color, all Ds have the same color; more about this here: www.musanim.com/mam/pfifth.htm)
- colors associate with the parts — right-click a note and select “Adjust color”
- which pitch is the tonic (home key) used in “color by pitch class” display — right-click a note and select “Set as tonic”; that note should turn blue
- invert light-dark — in the View menu, select Invert light/dark (useful if you’re going to print the screen on white paper)

2. Pitch Class (WHEEL) Display

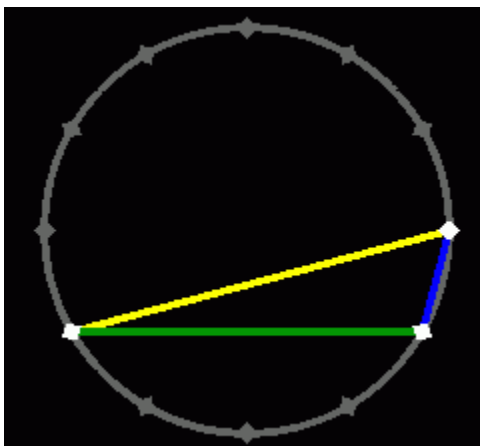


This is the “circle of fifths coloring” described in detail here:

www.musanim.com/mam/pfifth.htm In this version, pitch history during four time intervals is shown: the innermost ring shows whether a pitch is sounding right now, the next ring shows whether a note has been sounding in the last second or two, and so on to the outermost ring which takes a long time to build up and decay.

There are no custom controls for this display (but the pitch that you “set as tonic” on the MAM display will be uppermost here).

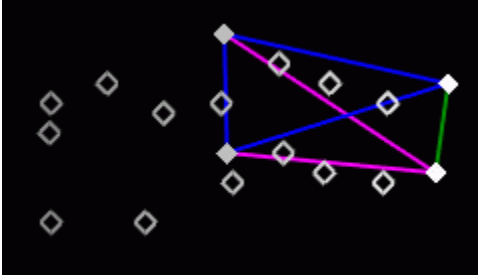
3. Intervals (DYAD) Display



Shows interval types; described in detail here: www.musanim.com/mam/dyad.htm

There are no custom controls for this display (but the pitch that you “set as tonic” on the MAM display will be uppermost here).

4. Interval + Pitch (YARN) Display



This combines the interval type display with some indication of pitch and time. It's called YARN because somebody commented that it looks like a scrolling ball of yarn.

See: www.musanim.com/mam/hist21.html

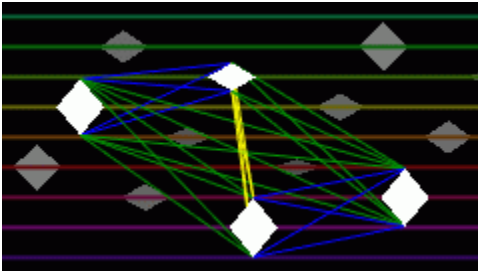
5. Shapes Display



Like the Pitch part of the YARN display, except that each part (instrument or voice) is given its own shape.

See: www.musanim.com/mam/hist23.html

6. Tonality Staff (V12) Display



Like the DYAD display, except that pitch is shown (left is low, right is high), and the twelve pitch classes are shown on staff lines (which move to keep the pitches centered.)

See: www.musanim.com/mam/hist30.html

There are no custom controls for this display (but the pitch that you “set as tonic” on the MAM display will be uppermost here).

7. Tonality Compass Display

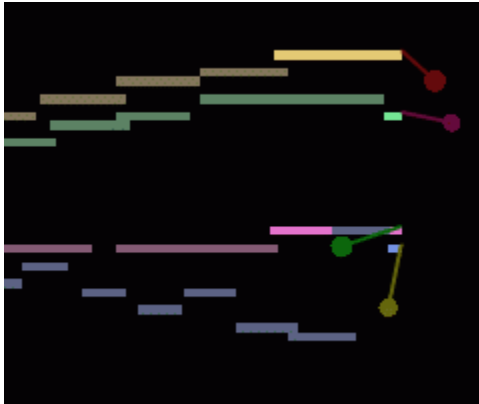


Like DYAD, except that the pitches are given (metaphorical) *weight* (depicted as size of the circles) based on dynamic level and *leverage* based on how low they are (distance of the circles from the axis); the pitch complex moves toward *tonal equilibrium* (the point at which its *center of gravity* is lowest).

See: www.musanim.com/mam/hist30.html

There are no custom controls for this display (but the pitch that you “set as tonic” on the MAM display will be uppermost here).

8. Tonality Compass + Bars Display

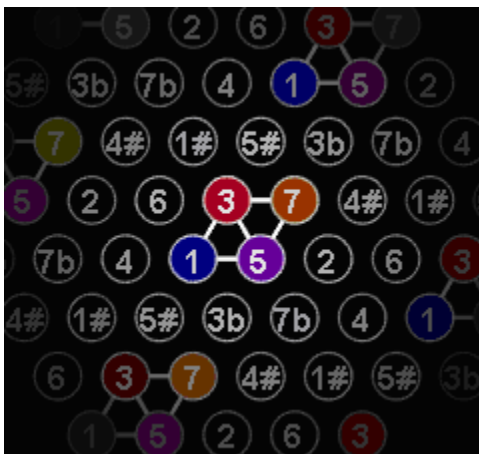


This combines the left-hand side of the MAM display with the Tonality Compass Display.

See: www.musanim.com/mam/hist30.html

See the MAM and Tonality Compass displays for descriptions of customization details.

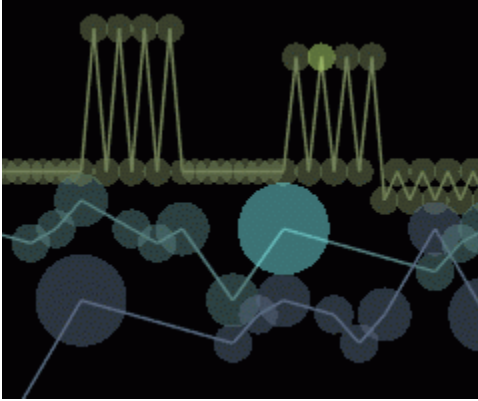
9. Triads (LATTICE) Display



In this pitch-class display, pitches separated by an interval of a perfect fifth or perfect fourth are adjacent on a given horizontal line. Pitches separated by a major or minor third are adjacent on a diagonal line. When adjacent pitches are sounding, their indicators light up in the corresponding pitch class color, and connecting lines are drawn. For example, in the example shown here, a major seventh chord, we see two perfect fifths (1-5 and 3-7), two major thirds (1-3 and 5-7) and one minor third (3-5).

See: www.musanim.com/mam/hist32.html

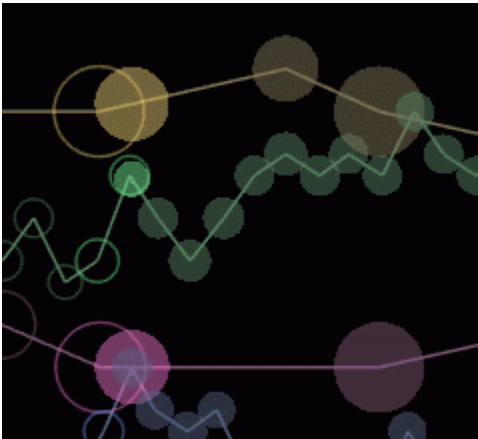
10. Part sequence (LINES) Display



In this display (suggested by Stéphane Barbery), the notes are represented by circles (the size of which corresponds to the length of the note) and the notes of each part (a part is a unique track/channel combination) are connected sequentially by lines.

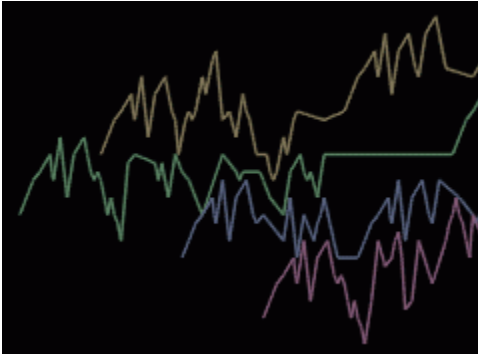
In this display, you can control the size with the up/down arrow keys. Changing the size of the window is useful, too, since the note sizes change with respect to that.

11. Part motion (BALLS) Display



Similar to LINES, in this one, the core of each ball detaches from its outline when the note is sounding, and moves toward the next not in the part (based on a suggestion by Douglas George).

12. Part trajectory (WEDGES) Display



Similar to LINES and BALLS, but with only a small hint of where the sounding notes are (based on a suggestion by Carl Lumma).

What's in the menus (and where to look for more information)

File

Open (see **Quick Start**)

Save (see **FAQ**)

Save As (see **FAQ**)

Close (see **FAQ**)

Exit

Edit <no available options>

View

Display type ... (see **Display Types and Display Options**)

... piano roll (MAM)

... pitch class (WHEEL)

... intervals (DYAD)

... interval + pitch (YARN)

... shapes

... tonality staff (V12)

... tonality compass

... tonality compass + bars

... triads (LATTICE)

Color by ... (see **Display type ... piano roll (MAM)**)

... part (MIDI track/channel)

... pitch class

Invert light/dark (see **Display type ... piano roll (MAM)**)

Now line (see **FAQ**)

MIDI keyboard menu (see **FAQ**)

Diagnostic window (see **Diagnostics and Debugging**)

Song Time (displays song position time)

Set tonic ... (see **Display type ... piano roll (MAM)**)

... C, C-sharp, D, ... B

MIDI

MIDI In (see **Live Play**)

MIDI Out (see **FAQ**)

Microsoft GS Wavetable SW Synth

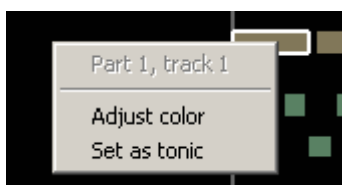
Force Channel 1 (see **FAQ**)

Play/Pause (spacebar) (see **Quick Start**)

Live Play (see **Live Play**)

Help <nothing of interest here>

If you right-click a note in the piano roll (MAM) display, you will get a popup menu:



Adjust color (see **Display type ... piano roll (MAM)**)

Set as tonic (see **Display type ... piano roll (MAM)**)

Live Play

If you have a MIDI keyboard attached to your computer, you can use the MAM Player's Live Play feature.

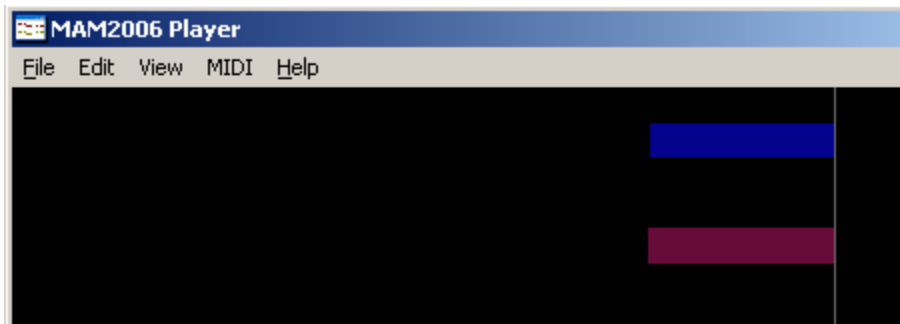
First, select your MIDI interface from the list of MIDI In devices in the MIDI In menu:



Then, turn on Live Play mode:



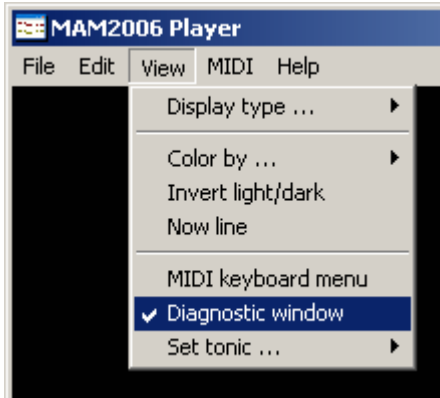
Because the MAM Player can't guess what's in the future, only the past (left-hand) part of the piano roll display will be visible:



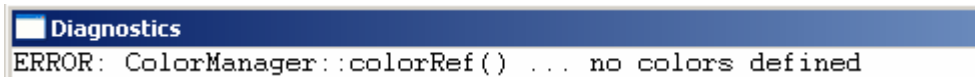
The MAM Player does not have a “thru” mode, so you'll need to have local sound enabled on your MIDI keyboard.

Diagnostics and Debugging

To help diagnose problems with the MAM Player, I've included a diagnostic display; the window in which appears is enabled with this menu item:



Internal problems with the software are sometimes detected and announced, like this:



If this happens at about the same time a problem happens, it might be related.

When you exit the program, everything in the diagnostic window is written to the log file

mamlog.txt

So, if the MAM Player crashes, doesn't work, etc., please send an email to

support@musanim.com

with a description of the problem (especially the exact steps required to reproduce it) and the log file. If it fails on a particular MIDI (or .mamx) file, send that too.

FAQ

Q: Can I record and save MIDI with the MAM Player?

A: Sorry, no. It's only a player.

Q: Then why do I see **Save** and **Save As** in the File menu?

A: Oh, right. That's because you can save the color settings for a particular song.

Q: How come I can't save the color settings in a MIDI file?

A: Because it's not part of the MIDI file spec.

Q: What is **Close** in the File menu for?

A: Not much; it just erases the screen if you have a song loaded.

Q: The MAM movies I've seen on YouTube don't have that obnoxious vertical line.

A: You can turn that off with the **Now Line** setting in the View menu. It's visible in the MAM and LINES displays.

Q: What's this "MIDI keyboard menu" thing?

A: If you have a MIDI keyboard plugged in, you can control some aspects of the program by pressing MIDI keys. It's probably not something most people will want to use; it's only there because it's part of the editor in the non-public version of the program I'm making for my own use.

Q: Non-public version? Editor?

A: Forget I mentioned it.

Q: The sound isn't synchronized with the bars — it's a little late.

A: You've probably got MIDI Out set to "Microsoft GS Wavetable SW Synth" — the built-in synthesizer that comes with Microsoft Windows. It has delays. If you use almost any other synthesizer (either a software synth like GigaSampler or an external module), you won't have this problem.

Q: When I play my MIDI file through my external keyboard, I don't hear all the notes.

A: I'm guessing that the MIDI file uses channels that your keyboard isn't playing. If that's the problem, try setting **Force Channel 1** (in the MIDI menu); this will cause the MAM Player to replace all the channel numbers with 1.

Q: How do I make a QuickTime or AVI or WMV movie of my MIDI file?

A: I haven't tried doing this myself, but at least one user has reported good results by using the Hyperionics HyperCam software.

end
